



**India Meteorological Department
(Ministry of Earth Sciences)**

NATIONAL BULLETIN NO. 41 (BOB/07/2024)

TIME OF ISSUE: 0915 HOURS IST

DATED: 02.12.2024

FROM: INDIA METEOROLOGICAL DEPARTMENT (FAX NO. 24643965/24699216/24623220)

**TO: CONTROL ROOM, NDM, MINISTRY OF HOME AFFAIRS (FAX.NO. 23093750)
CONTROL ROOM NDMA (FAX.NO. 26701729)
CABINET SECRETARIAT (FAX.NO.23012284, 23018638)
PS TO HON'BLE MINISTER FOR S & T AND EARTH SCIENCES (FAX NO.23316745)
SECRETARY, MOES (FAX NO. 24629777)
H.Q. (INTEGRATED DEFENCE STAFF AND CDS) (FAX NO. 23005137/23005147)
DIRECTOR GENERAL, DOORDARSHAN (23385843)
DIRECTOR GENERAL, AIR (23421105, 23421219)
PIB MOES (FAX NO. 23389042)
UNI (FAX NO. 23355841)
D.G. NATIONAL DISASTER RESPONSE FORCE (NDRF) (FAX NO. 26105912, 2436 3260)
DIRECTOR, PUNCTUALITY, INDIAN RAILWAYS (FAX NO. 23388503)
CHIEF SECRETARY, ANDAMAN & NICOBAR ISLANDS (FAX NO. 03192-232656)
CHIEF SECRETARY, TAMIL NADU (FAX NO. 044-25672304)
CHIEF SECRETARY, ANDHRA PRADESH (FAX NO. 0863-2441029)
CHIEF SECRETARY, PUDUCHERRY (FAX NO. 0413-2334145)
CHIEF SECRETARY, ODISHA (FAX NO. 0674-2536660)**

Sub: Well marked low pressure area (Remnant of Cyclonic Storm "FENGAL") over north interior Tamil Nadu

The Depression (Remnant of Cyclonic Storm "FENGAL") over north coastal Tamil Nadu & Puducherry moved nearly westwards and weakened into a Well Marked Low Pressure Area at 0530 hrs IST of today, the 02nd December 2024, over North Interior Tamil Nadu. The remnant low pressure area is likely to emerge over southeast and adjoining east-central Arabian Sea off north Kerala-Karnataka coasts around 3rd December 2024.

Warnings:

(i) Rainfall Warning:

North Interior Tamil Nadu, South Interior Karnataka and Rayalaseema: Light to moderate rainfall at many places with isolated **heavy rainfall** is very likely over North interior Tamil Nadu, South Interior Karnataka and adjoining Rayalaseema on 2nd December.

Coastal Karnataka: Light to moderate rainfall at many places with **heavy rainfall** at isolated places is very likely on 2nd and 3rd December.

Kerala: Light to moderate Rainfall activity at most places with **heavy to very heavy rainfall** at a few places & **extremely heavy rainfall** at isolated places on 2nd and **heavy rainfall** at isolated places on 3rd December.

Impact Expected due to extremely heavy rainfall over Kerala on 02nd December:

- Major damage to Kutcha and minor damage to Pucca roads.
- Some damage to paddy crops, banana, papaya, drum sticks (moringa) trees and orchards.
- Disruption of traffic in major cities due to water logging in roads leading to increased travel time.
- Damage to horticulture and standing crops including vegetable crops in some areas due to inundation.

Action Suggested:

- Check for traffic congestion on your route before leaving for your destination.
- Follow any traffic advisories that are issued in this regard.
- Avoid going to areas that face the water logging problems often.
- Avoid staying in vulnerable structure.

Agromet advisories:

Provide adequate drainage facilities for the removal of excess water from rice, cotton, sugarcane, turmeric, tobacco and vegetable fields, coconut and banana orchards. Provide mechanical support to banana plants to prevent lodging.

- Make arrangements to drain out excess water from the standing crop fields and fruit orchards.
- Harvest the matured crops and keep it in safe place.
- Provide mechanical support to horticultural crops and staking to vegetable crops.

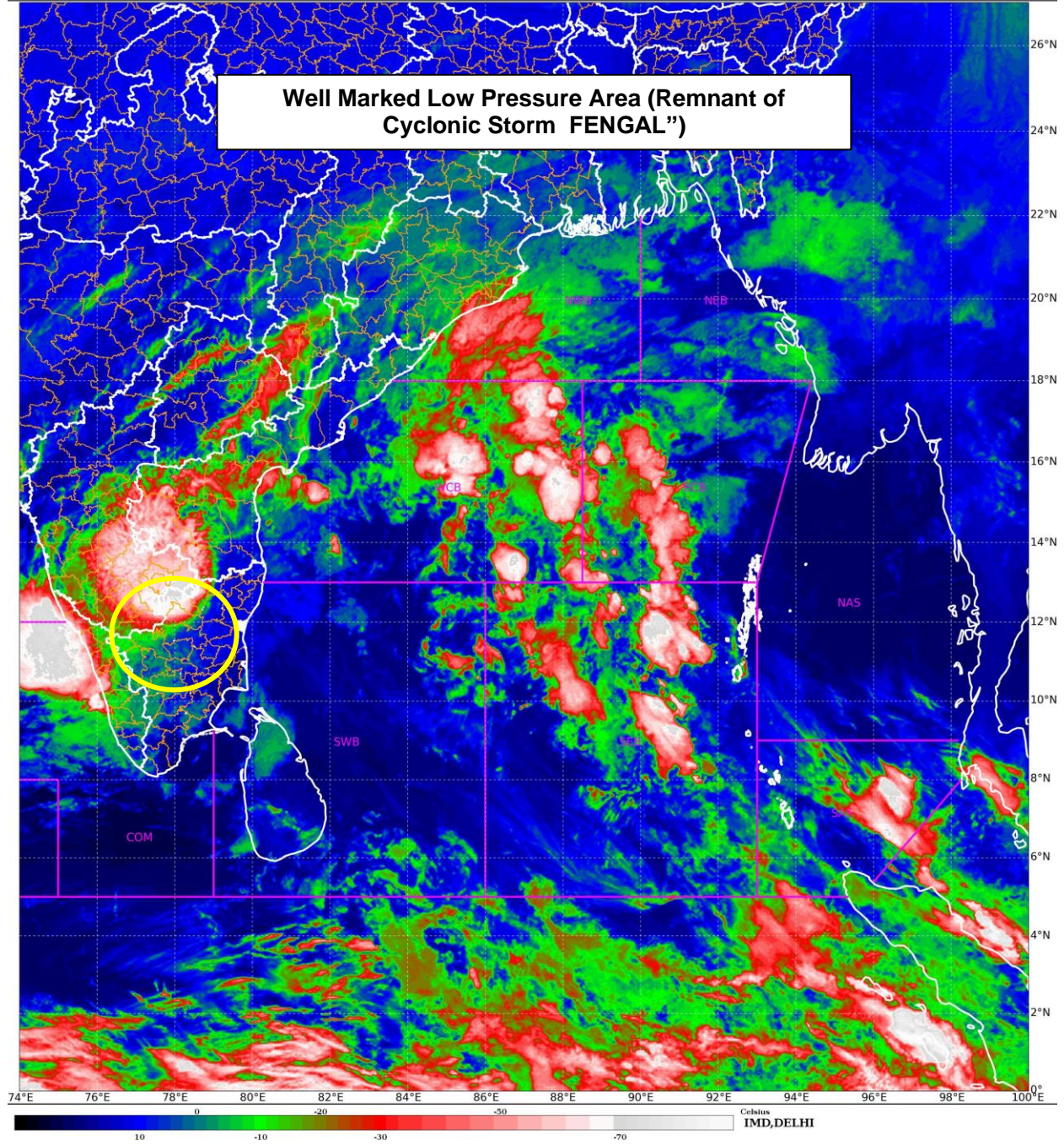
This is the last bulletin in association with this system. However, regular bulletins would continue from National Weather Forecasting Centre and concerned regional meteorological centre/state meteorological centres.

**(Dr Trisanu Banik)
Scientist D, RSMC, New Delhi**

*Copy to: ACWC Kolkata/ACWC Chennai/CWC Bhubaneswar/MC, Amaravati/MC,
Thiruvananthapuram/CWC, Vishakhapatnam*

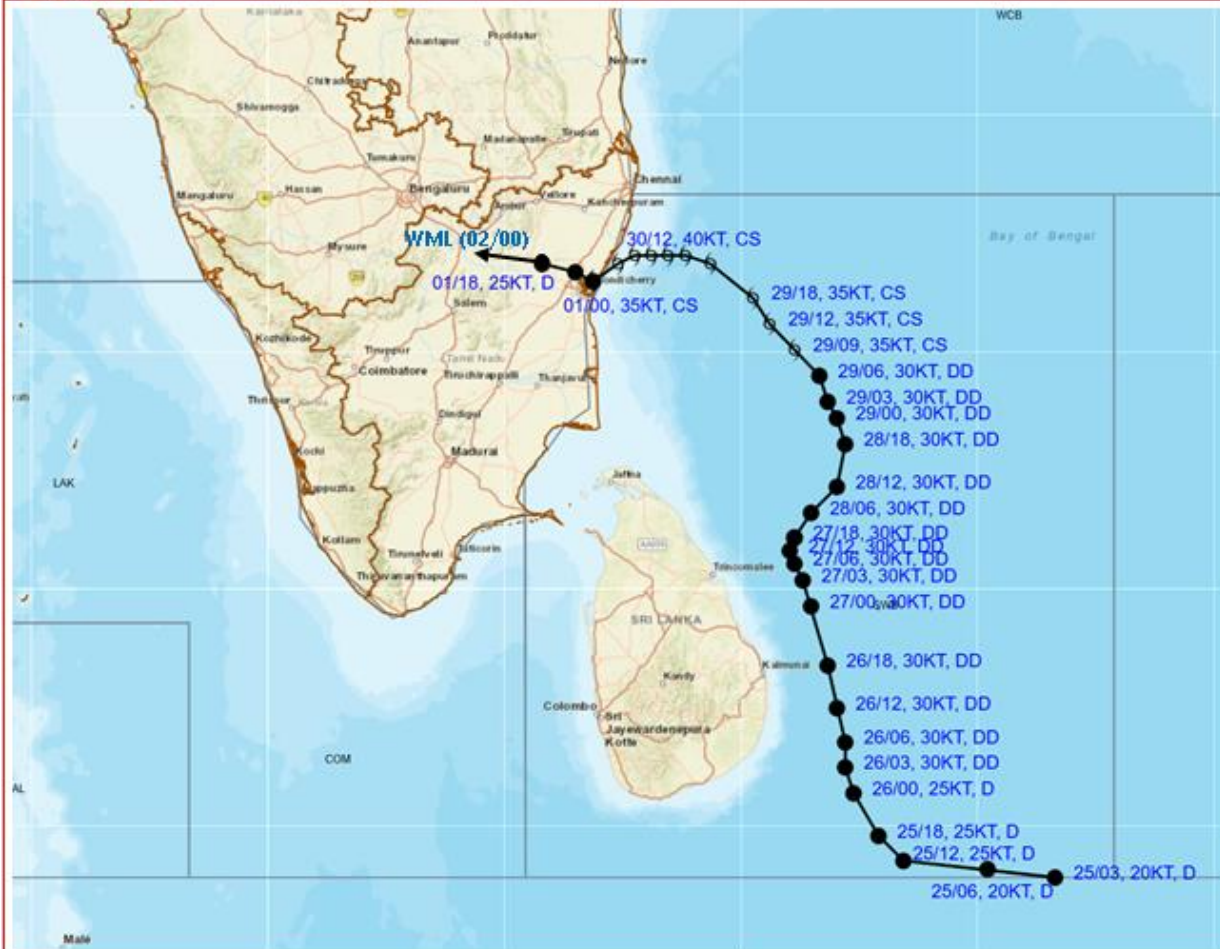


Well Marked Low Pressure Area (Remnant of Cyclonic Storm FENGAL")





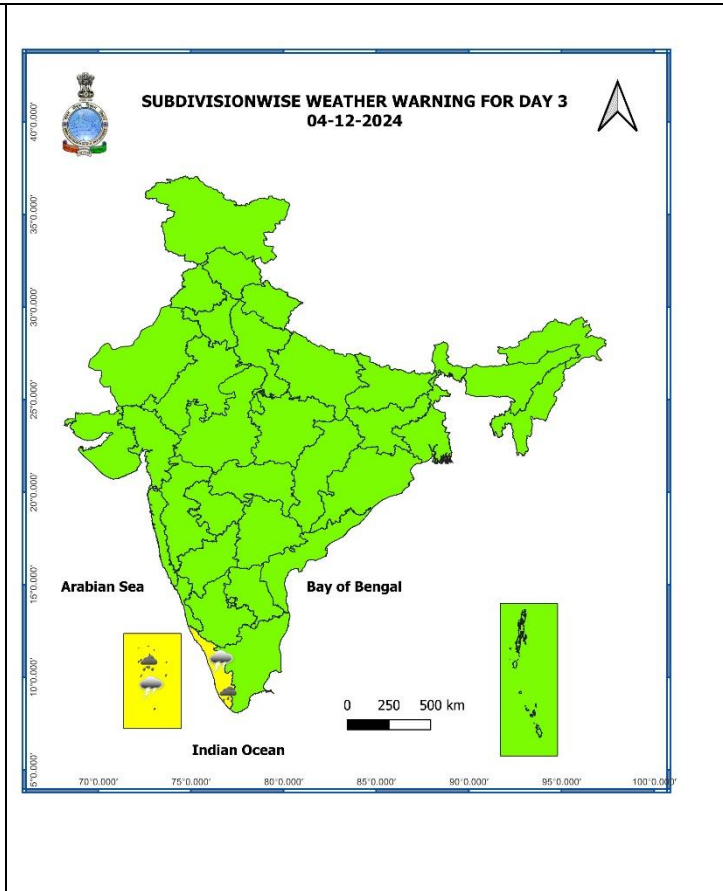
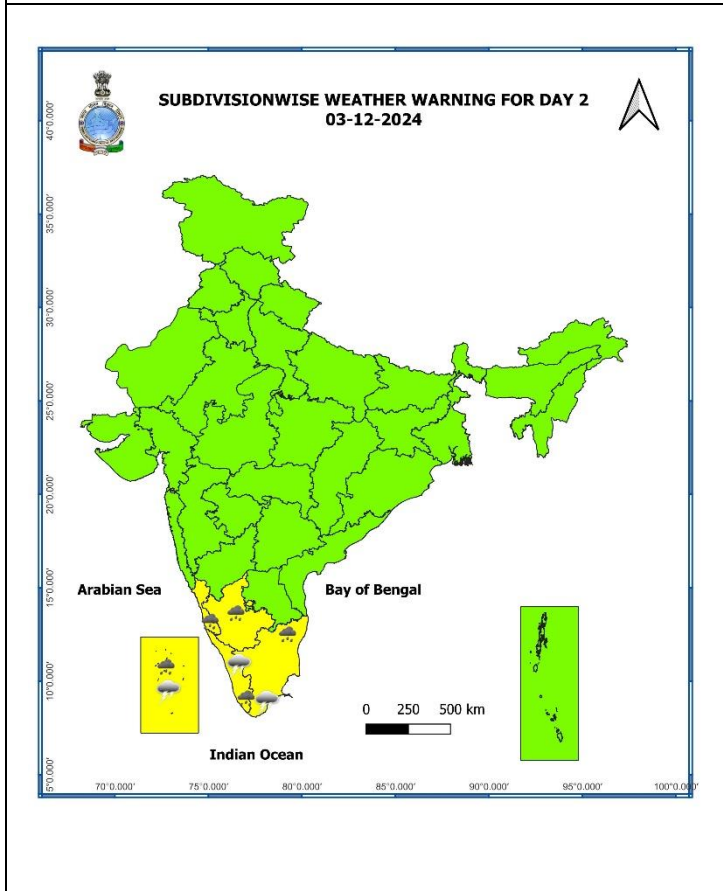
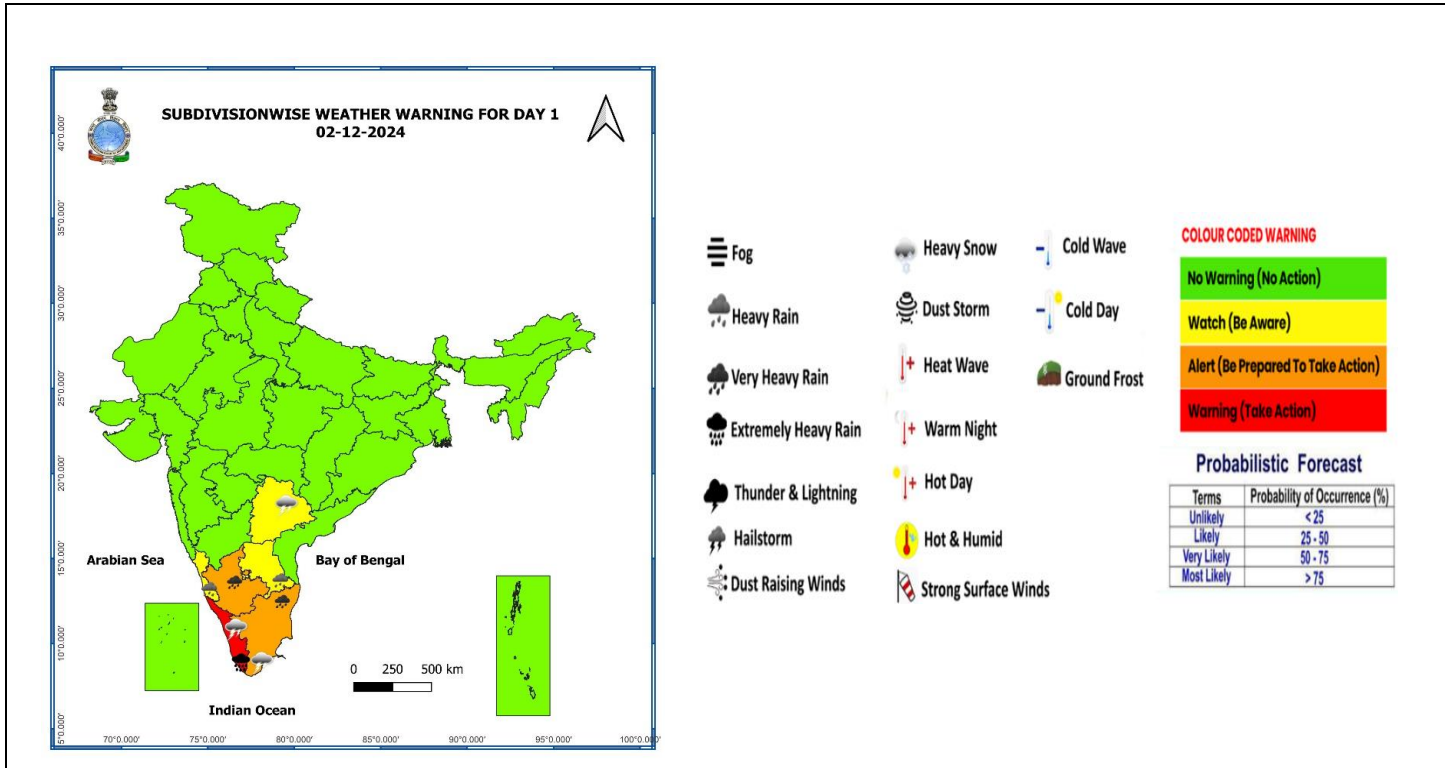
OBSERVED TRACK OF CYCLONIC STORM "FENGAL" OVER SOUTHWEST BAY OF BENGAL DURING 25TH NOVEMBER - 1ST DECEMBER, 2024.

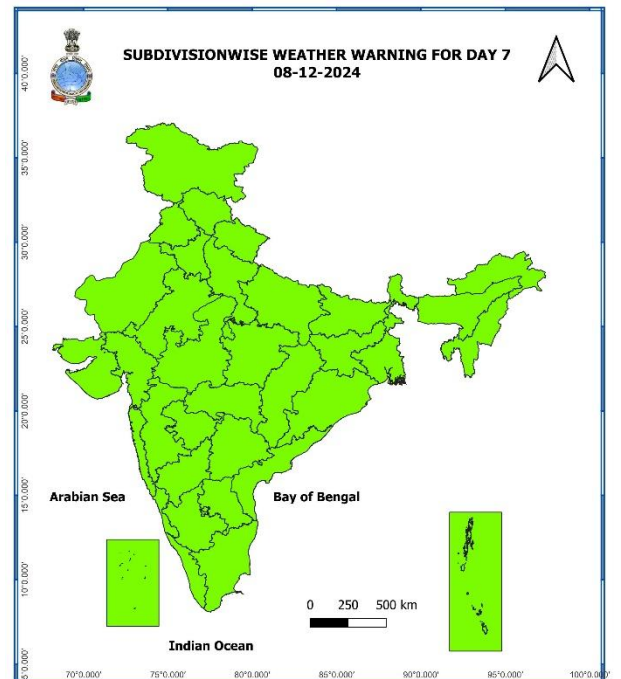
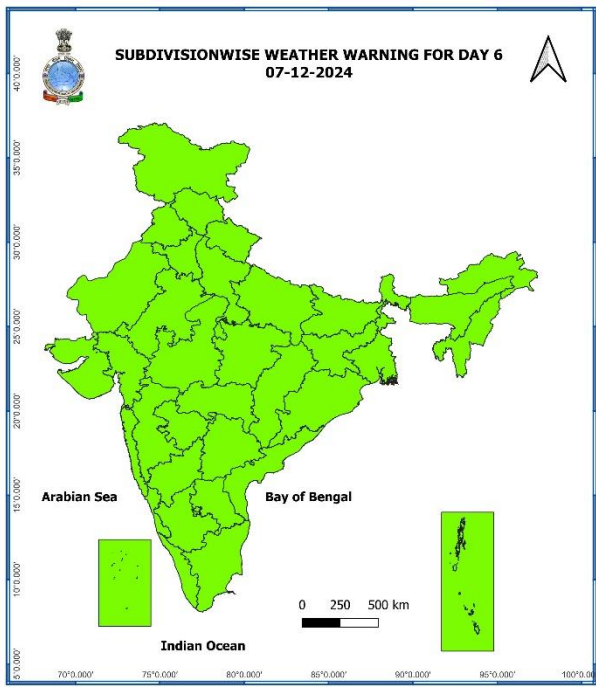
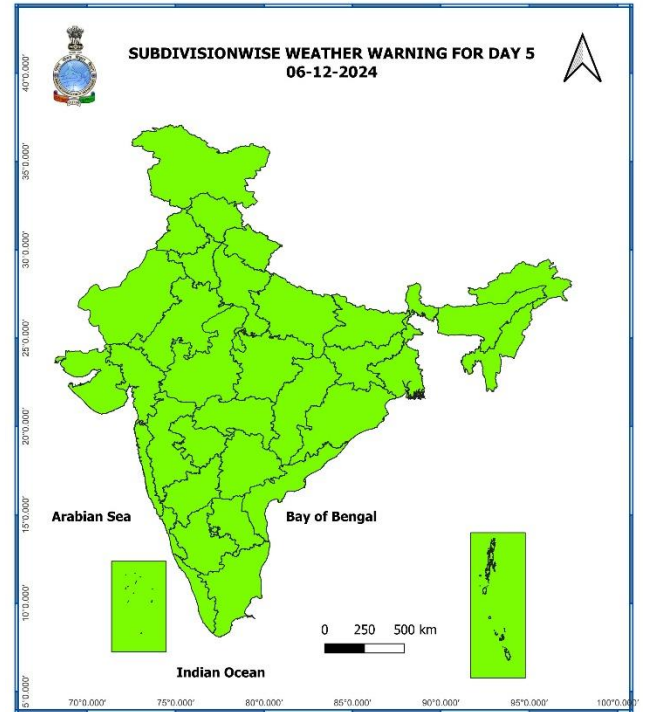
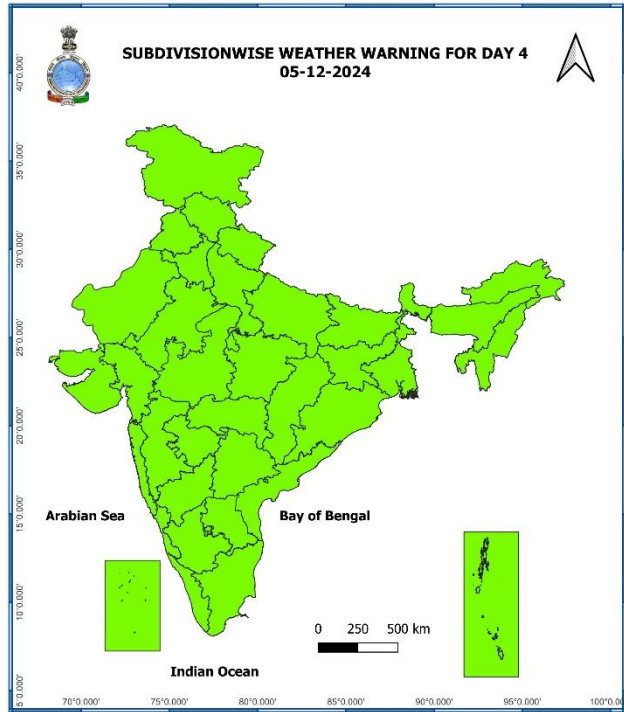


DATE/TIME : IN UTC
IST : UTC + 0530
KT : NAUTICAL MILE S/HOUR = 1.85 KM/HOUR
LPA : LOW PRESSURE AREA
WML : WELL MARKED LOW PRESSURE AREA
D : DEPRESSION (17-27 KT)
DD : DEEP DEPRESSION (28-33 KT)
CS : CYCLONIC STORM (34-47 KT)
SCS : SEVERE CYCLONIC STORM (48-63 KT)
VSCS : VERY SEVERE CYCLONIC STORM (64-89 KT)
ESCS : EXTREMELY SEVERE CYCLONIC STORM (90-119 KT)
SuCS : SUPER CYCLONIC STORM (≥120 KT)

LESS THAN 34 KT
 34.47 KT
 ≥ 48 KT
 OBSERVED TRACK
 FORECAST TRACK
 CONE OF UNCERTAINTY

Weather Warning Graphics





- Action may be taken based on **ORANGE AND RED COLOUR** warnings.
- Vulnerable regions likely urban and hilly areas action may be initiated for heavy rainfall warning.
- As the lead period increases forecast accuracy decreases.